



Foundation for Peatland Restoration and Conservation



Interreg



EUROPEAN UNION

Latvija-Lietuva

European Regional Development Fund

**LLI-476 IMPROVEMENT OF THE ENVIRONMENTAL CONDITIONS OF THE PUBLIC
WATER BODIES IN LATVIA AND LITHUANIA (SAVE PAST FOR FUTURE)**

Delivarable T2.3.1 - Report of managed trees in Bebrene manor park

Vilnius, 2022

The Interreg V-A Latvia – Lithuania Cross Border Cooperation Programme 2014-2020 aims to contribute to the sustainable and cohesive socio-economic development of the Programme regions by helping to make them competitive and attractive for living, working and visiting. This project is funded by the European Union . Total projects size is 1 030 848.12EUR. Out of them co-funding of European Regional Development Fund is 876 220.89 EUR .

This document has been produced with the financial assistance of the European Union. The contents of this document are the sole responsibility of Foundation for Peatland restoration and Conservation and can under no circumstances be regarded as reflecting the position of the European Union.

2014–2020 m. Interreg V-A Latvijos ir Lietuvos bendradarbiavimo per sieną programa siekia prisidėti prie darnaus programos teritorijos vystymosi padėdama jai tapti patrauklia ir konkurencinga vieta gyventi, dirbti ir apsilankyti. Šį Projektą iš dalies finansuoja 2014–2020 m. Interreg V-A Latvijos ir Lietuvos bendradarbiavimo per sieną programa ir Lietuvos Respublika. Visas projekto biudžetas 1 030 848,12 Eur. Iš jų – bendrasis Europos regioninės plėtros fondo finansavimas 876 220,89 Eur.

Šis leidinys parengtas naudojant Europos Sąjungos finansinę paramą. Už šio dokumento turinį atsako VšĮ Pelkių atkūrimo ir apsaugos fondas. Jokiomis aplinkybėmis negali būti laikoma, kad jis atspindi Europos Sąjungos nuomonę.

Introduction

The park is an excellent heritage of garden and park art and one of the visually most impressive landscape parks in Latvia, with the area of 7.9 ha. The park has been arranged in late 19th century, and 200 year old oak-trees are still growing there. The central part of the park is surrounded by an arch-type road, which reveals various landscapes and a view to 3 ponds — the biggest one is millpond, while two others are smaller, and one of them has a picturesque island in the middle of it that can be reached from a romantic small bridge (Figure. 1). There are 81 tree and shrub taxa (species, subspecies, varieties) in the park: 30 native species and 51 alien species. Special values of the park include natural monuments of national and local significance. The park has great dendrological value and very significant value as a monument of garden and park art, as well as a place for the preservation of biological diversity in nature. The landscape park is located on the top of a flat hill with slightly sloping edges, on the NW side there is a natural ravine with a small river. Bebrene manor park is state owned and belongs to Augsdaugavas municipality.

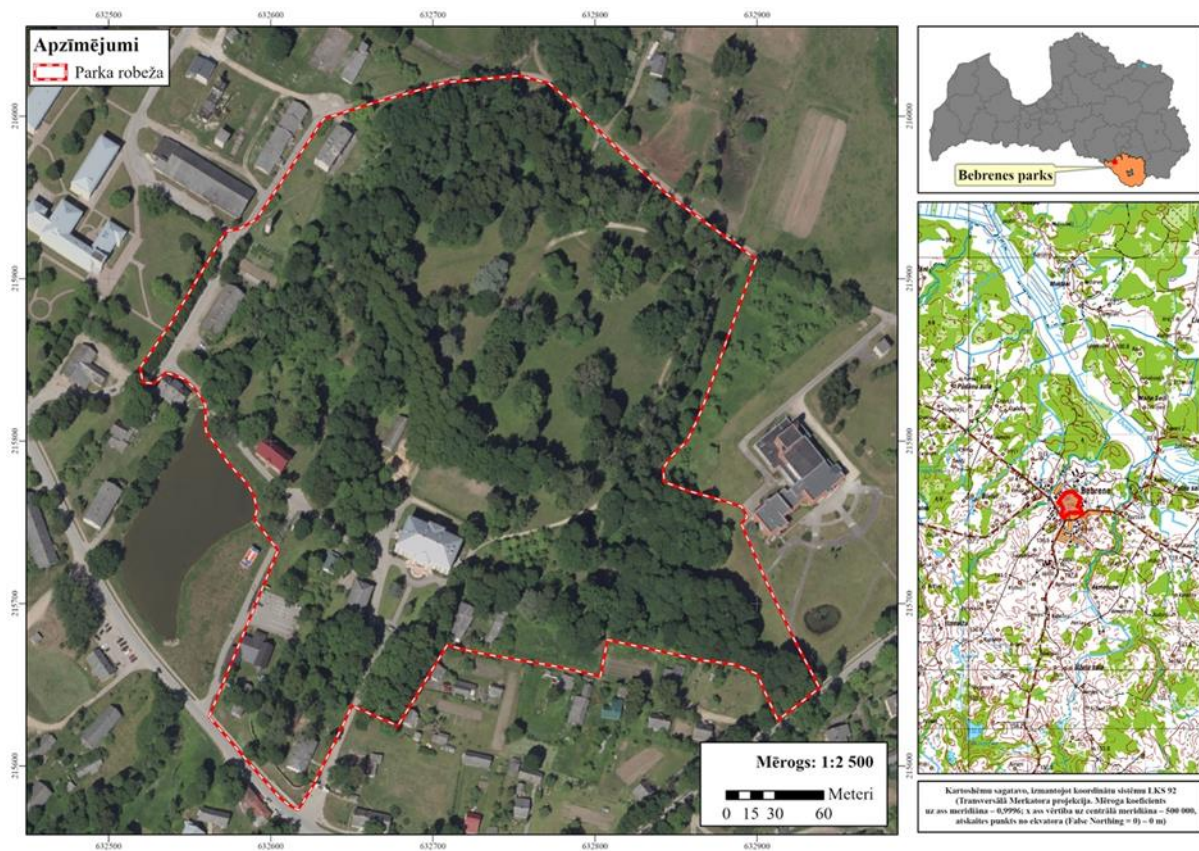


Figure 1. Location of Bebrene Park

Implemented actions

By creating the habitats for huge variety of species, old trees are the most valuable element of Bebrene park. In order to ensure longevity and favorable conservation status of these trees several measures might be taken. Maintenance of old veteran trees requires special skills and knowledge. Thus, it should be taken into consideration, that maintenance of veteran trees should be implemented after the consultation with professional arborist or dendrologist.

13 veteran trees valuable for biodiversity were inventoried during the investigations (Figure 2). However, some of them were managed by professional arborists previously or grows in the remote sites of the park and thus do not pose significant danger for the visitors. Therefore, management actions were implemented only for three most vulnerable oak trees (Table 1). Management actions mostly included the cutting of dead dry branches. In order to not disturb the birds during their breeding season, arboristic actions were implemented in the first half of February, 2022. These works were performed by certified “MB Balta laja” arborists who have won the competition and have the necessary qualifications for the care of valuable trees, certificates issued by the Lithuanian Arborists Association and experience of similar work.

Table 1. The list of veteran trees, which were managed

Species name	Coordinates, WGS	Height (m), age (years), diameter (cm)	Conservation status	Natural value	Measures
<i>Quercus robur</i>	56.067536, 26.130471	18, 120, 73	bad	Tree important for biodiversity	Cutting the dead dry branches
<i>Quercus robur</i>	56.068213, 26.133467	21, 130, 120	Bad	Tree important for biodiversity and dendrology	Cutting the dead dry branches, tiding the tree crown
<i>Quercus robur</i>	56.067536, 26.130471	18, 120, 73	bad	Tree important for biodiversity	Cutting the dead dry branches



Figure 2. The location of veteran trees in Bebrene manor park. The managed oaks are provided in red spotted circles.